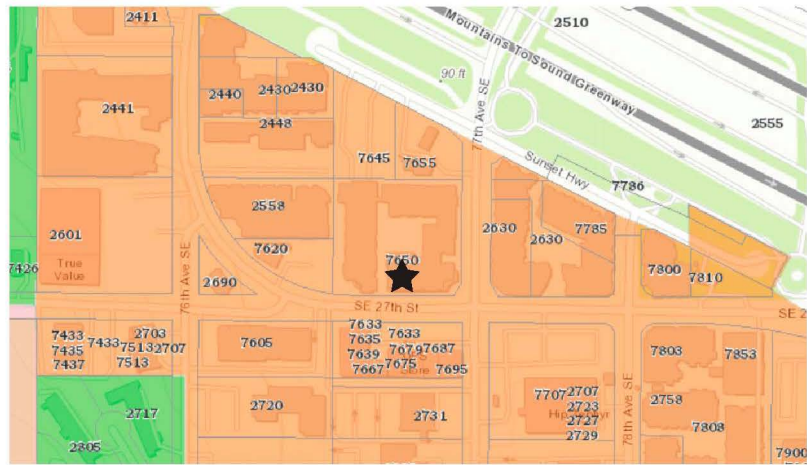


Vicinity Map (NTS)



Zoning Map (NTS)

QDOBA

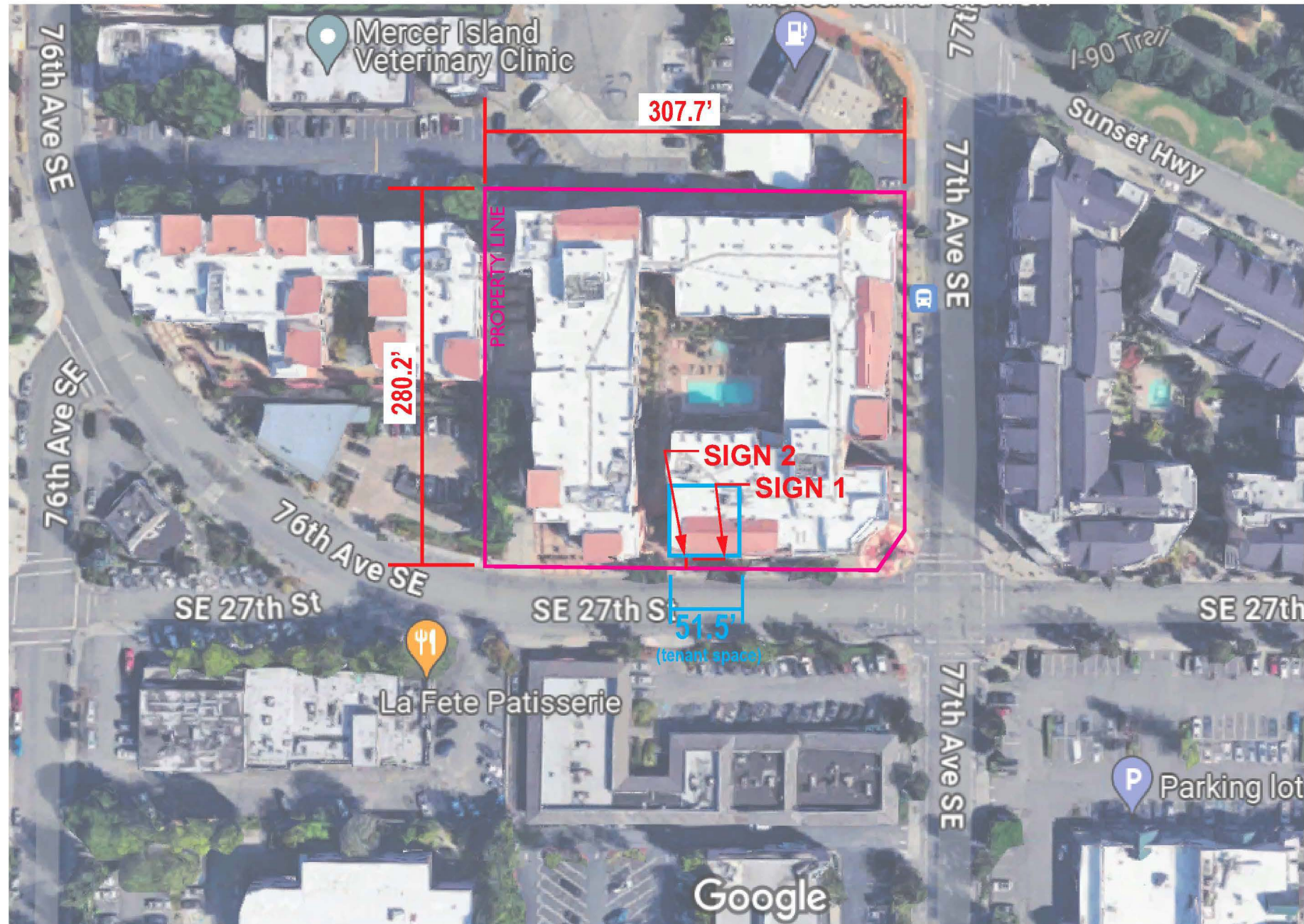
7650 SE 27th St

Suite 106

Mercer Island, WA 98040


Parcel: 5315101491

Zone: TC (Town Center)



Site Plan (Scale 1"=100'-0")

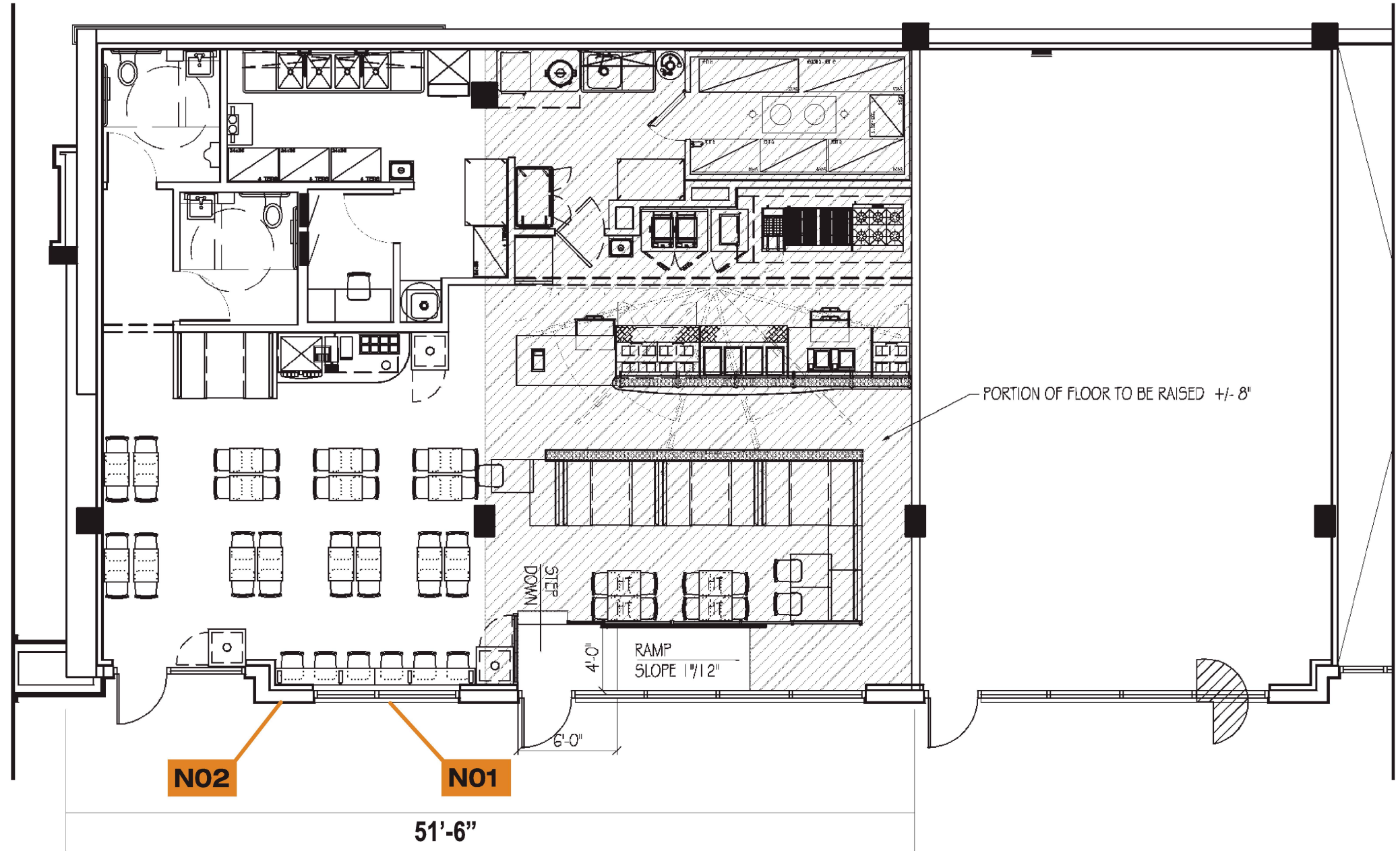


 City Lights Sign Company 902 NW 49th St Seattle WA 98107 Ph: 206-789-4747 Cell: 206-255-7029	Client:		Date:	This drawing was created to assist you. The drawing and ideas are the property of City Lights Sign Co. and cannot be replicated or used without the written permission of City Lights Sign Co. Ask your City Lights Sign Co rep for written permission.	
	QDOBA		03.05.24		
	Address:	City:	Job Number:		
	7650 SE 27TH ST SUITE 106	MERCER ISLAND 98040			


SCOPE OF WORK

N01 Remove existing signage
- Install (1) WM-18-RW

N02 Remove existing signage
- Install (1) B-V-5



PLAN VIEW
1/8" = 1'-0"

 <p>City Lights Sign Company 902 NW 49th St Seattle WA 98107 Ph: 206 -789-4747 Cell: 206-255-7029</p>	Client:		Date:	This drawing was created to assist you. The drawing and ideas are the property of City Lights Sign Co. and cannot be replicated or used without the written permission of City Lights Sign Co. Ask your City Lights Sign Co rep for written permission.	
	QDOBA		03.05.24		
	Address:	City:	Job Number:		
	7650 SE 27TH ST SUITE 106	MERCER ISLAND 98040			

Created: 05/10/17 - TM
Rev1: 08/24/17 - TM
Rev2: 08/26/17 - TM
Rev3: 09/27/17 - TM



Qdoba Store #2390
7650 SE 27th St Suite 106
Mercer Island, WA 98040

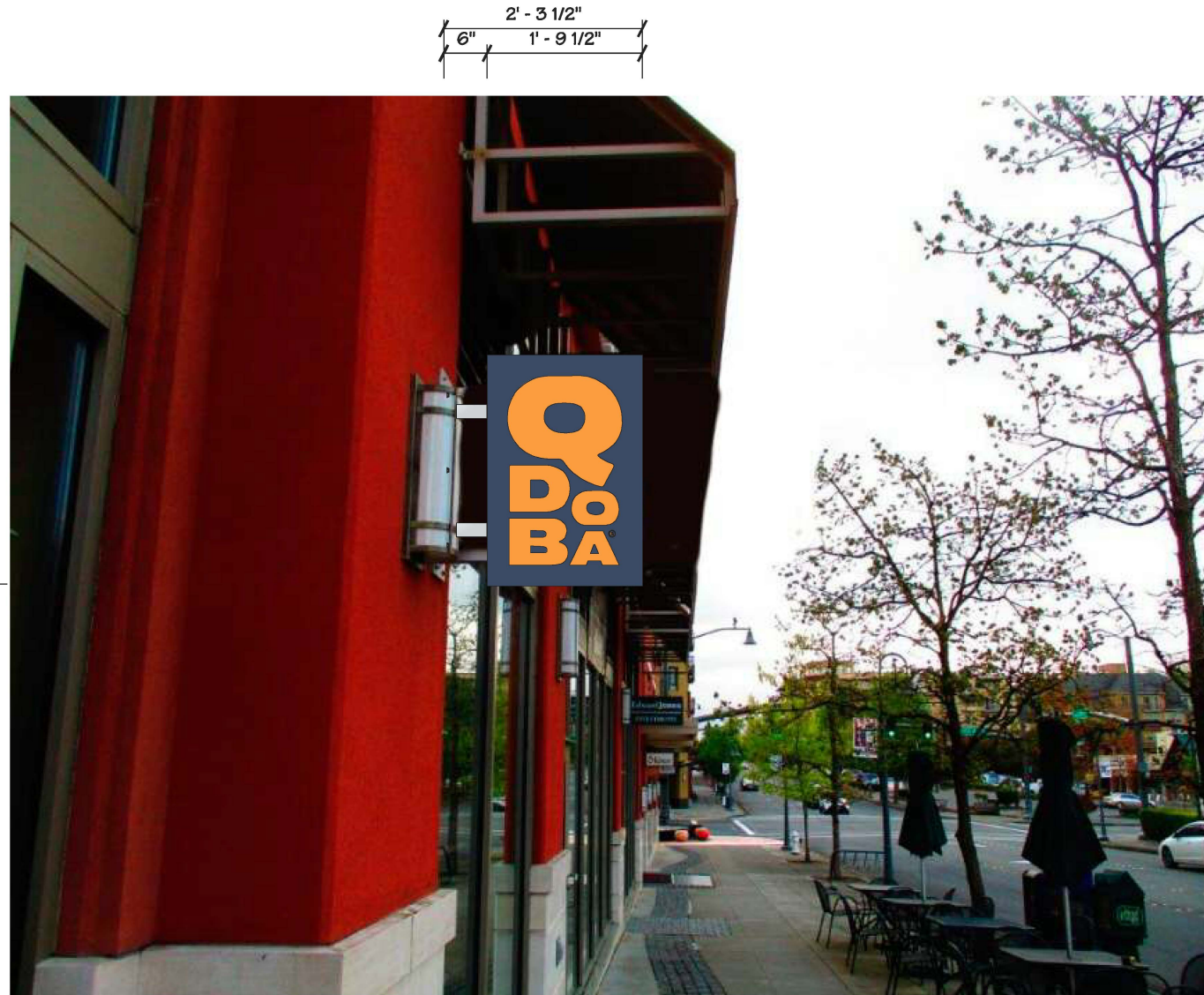


This document is the sole property of Architectural Graphics, Inc., and all design, manufacturing, reproduction, use and sale rights regarding the same are expressly forbidden. It is submitted under a confidential relationship, for a special purpose, and the recipient, by accepting this document assumes custody and agrees that this document will not be copied or reproduced in whole or in part, nor its contents revealed in any manner or to any person except for the purpose for which it was tendered, nor any special features peculiar to this design be incorporated in other projects.



EXISTING ELEVATION
NTS

Current 6 S/F



PROPOSED ELEVATION
NTS

Proposed 4.8 S/F

Bottom of sign
will be at least 8 ft
from ground

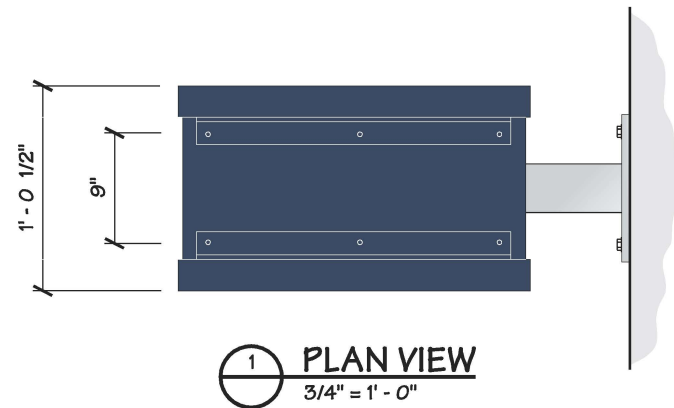
Created: 05/10/17 - TM
Rev1: 08/24/17 - TM
Rev2: 08/26/17 - TM
Rev3: 09/27/17 - TM



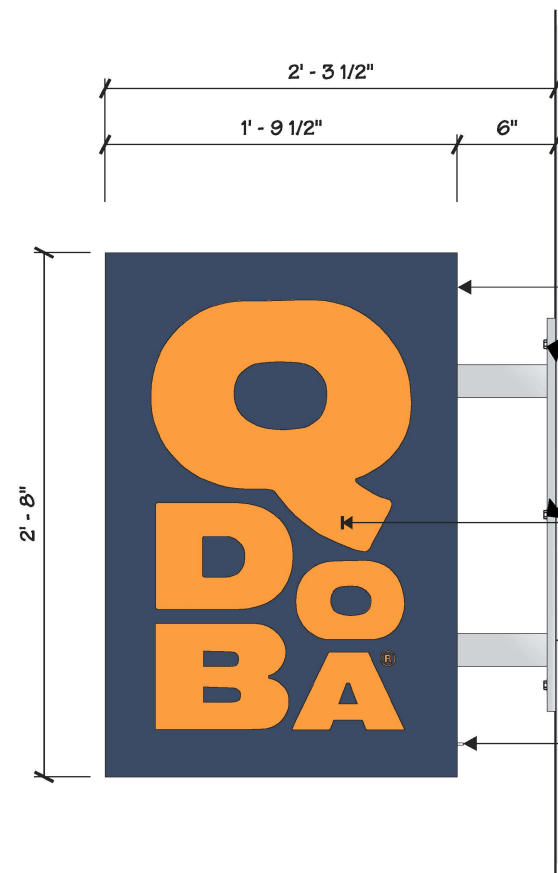
Qdoba Store #2390
7650 SE 27th St Suite 106
Mercer Island, WA 98040



This document is the sole property of Architectural Graphics, Inc., and all design, manufacturing, reproduction, use and sale rights regarding the same are expressly forbidden. It is submitted under a confidential relationship, for a special purpose, and the recipient, by accepting this document assumes custody and agrees that this document will not be copied or reproduced in whole or in part, nor its contents revealed in any manner or to any person except for the purpose for which it was tendered, nor any special features peculiar to this design be incorporated in other projects.

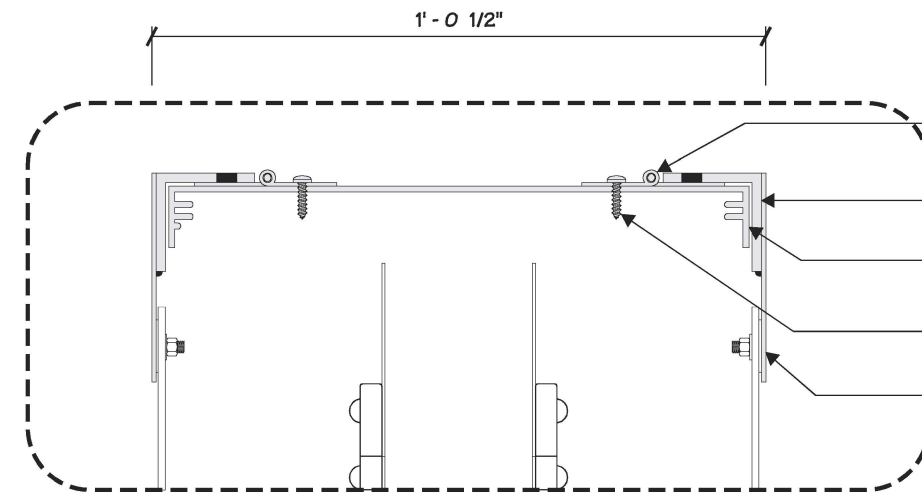


1 PLAN VIEW
3/4" = 1'-0"



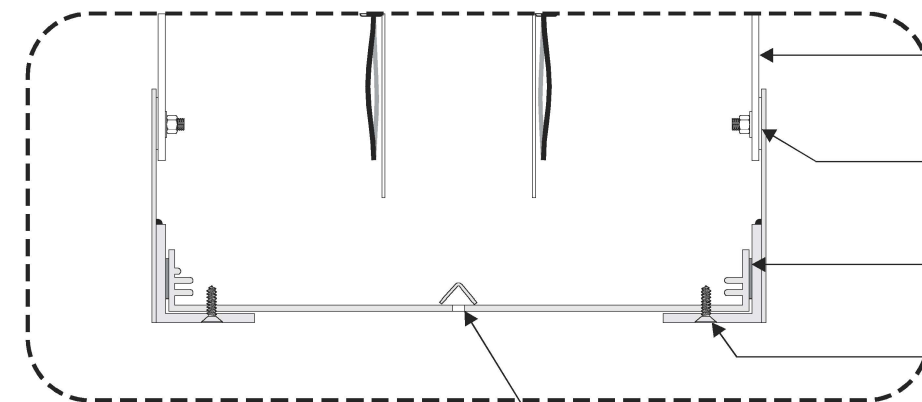
2 FRONT ELEVATION
1" = 1'-0"

- FABRICATED ALUM. CABINET W/ RETURNS, RETAINERS & LOUVERED VENTS PAINTED MAP TO MATCH BENJAMIN MOORE 826 'STUNNING'
- 3/8" by 2.5" lag bolts with shields two (2) in top bracket and two (2) in bottom bracket or equivalent fasteners to meet wall conditions
- COPY ROUTED FROM FACE & BACKED W/ TRANSLUCENT WHITE ACRYLIC W/ SURFACE APPLIED TRANSLUCENT VINYL 3M #3630-3694 'ORANGE'
- ALUM. SUPPORT TUBES & MOUNTING PLATE PAINTED MAP 'BRUSHED ALUMINUM'
- U.L. LISTED DISCONNECT SWITCH



3 SECTION DETAIL
1/4" = 1"

- 3" OPEN X .060 LEAF ALUM. CONT. PIANO HINGE PUDDLE WELDED TO ALUM. ANGLE FRAME
- 2" X 2" X 1/8" ALUM. ANGLE FACE FRAME
- AGI 13 13/16" ALUM. CHANNEL FRAME
- #10 X 1" S.S. P.H. SHEET METAL SCREWS @ 8" O.C.
- .090 ALUM. FACE PANEL VERSILOKED TO ALUM. ANGLE FACE FRAME



4 SECTION DETAIL
1/4" = 1"

- .118" #7328 TRANSLUCENT WHITE IMPACT MODIFIED ACRYLIC FACE
- 1/4"-20 STUD PADS VERSILOKED TO BACK OF PANEL
- WEATHER STRIPPING AROUND FRAME TO PREVENT LIGHT LEAKS
- #8 X 1/2" LONG S.S. C.S. SHEET METAL SCREWS @ 12" O.C. - PAINT HEADS TO MATCH CABINET
- 1/4"Ø WEEP HOLES & LIGHT SHIELDS AS REQ'D

Created: 05/10/17 - TM
 Rev1: 08/24/17 - TM
 Rev2: 08/26/17 - TM
 Rev3: 09/27/17 - TM



Qdoba Store #2390
 7650 SE 27th St Suite 106
 Mercer Island, WA 98040



This document is the sole property of Architectural Graphics, Inc., and all design, manufacturing, reproduction, use and sale rights regarding the same are expressly forbidden. It is submitted under a confidential relationship, for a special purpose, and the recipient, by accepting this document assumes custody and agrees that this document will not be copied or reproduced in whole or in part, nor its contents revealed in any manner or to any person except for the purpose for which it was tendered, nor any special features peculiar to this design be incorporated in other projects.



Current = 45 S/F

EXISTING FRONT ELEVATION

NTS



WM-18-RW = 25 S/F

PROPOSED FRONT ELEVATION

NTS

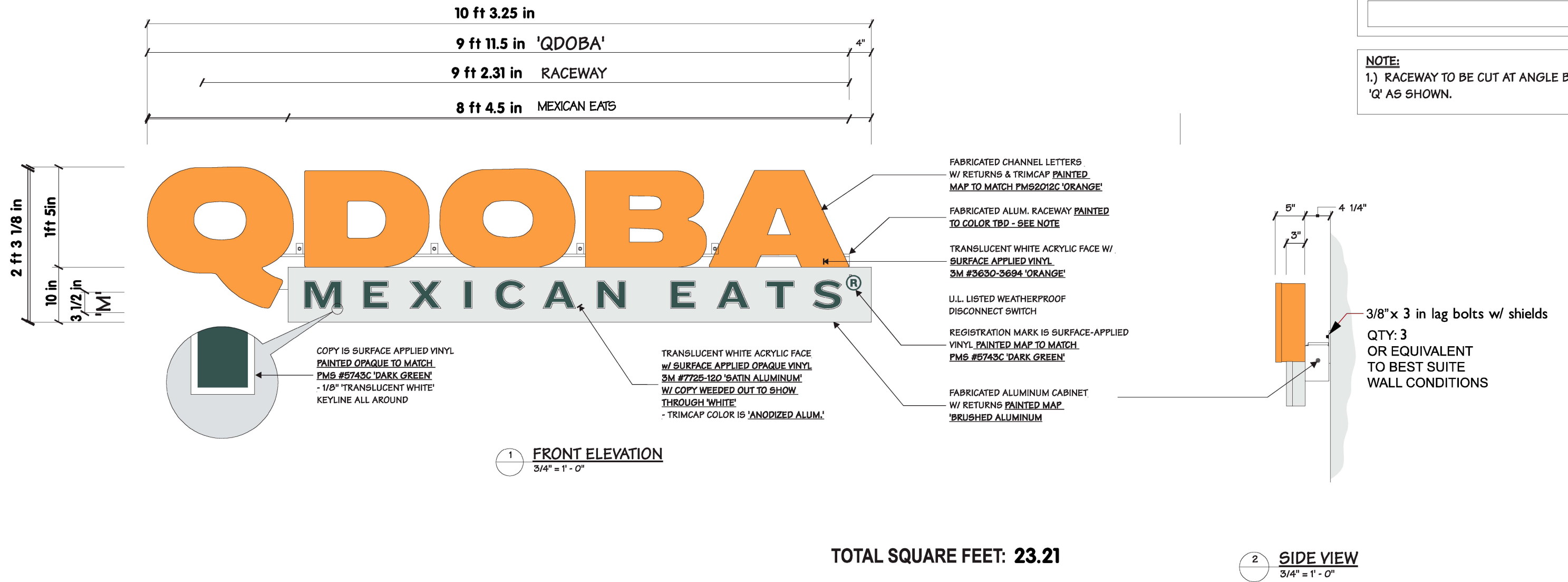
Created: 05/10/17 - TM
 Rev1: 08/24/17 - TM
 Rev2: 08/26/17 - TM
 Rev3: 09/27/17 - TM



Qdoba Store #2390
 7650 SE 27th St Suite 106
 Mercer Island, WA 98040



This document is the sole property of Architectural Graphics, Inc., and all design, manufacturing, reproduction, use and sale rights regarding the same are expressly forbidden. It is submitted under a confidential relationship, for a special purpose, and the recipient, by accepting this document will not be copied or reproduced in whole or in part, nor its contents revealed in any manner or to any person except for the purpose for which it was tendered, nor any special features peculiar to this design be incorporated in other projects.



N01

<p>City Lights Sign Company 902 NW 49th St Seattle WA 98107 Ph: 206-789-4747 Cell: 206-255-7029</p>	Client: QDOBA		Date: 03.05.24	This drawing was created to assist you. The drawing and ideas are the property of City Lights Sign Co. and cannot be replicated or used without the written permission of City Lights Sign Co. Ask your City Lights Sign Co rep for written permission.
	Address: 7650 SE 27TH ST SUITE 106	City: MERCER ISLAND 98040	Job Number:	



Qdoba Store #2390
7650 SE 27th St Suite 106
Mercer Island, WA 98040



This document is the sole property of Architectural Graphics, Inc., and all design, manufacturing, reproduction, use and sale rights regarding the same are expressly forbidden. It is submitted under a confidential relationship, for a special purpose, and the recipient, by accepting this document assumes custody and agrees that this document will not be copied or reproduced in whole or in part, nor its contents revealed in any manner or to any person except for the purpose for which it was tendered, nor any special features peculiar to this design be incorporated in other projects.